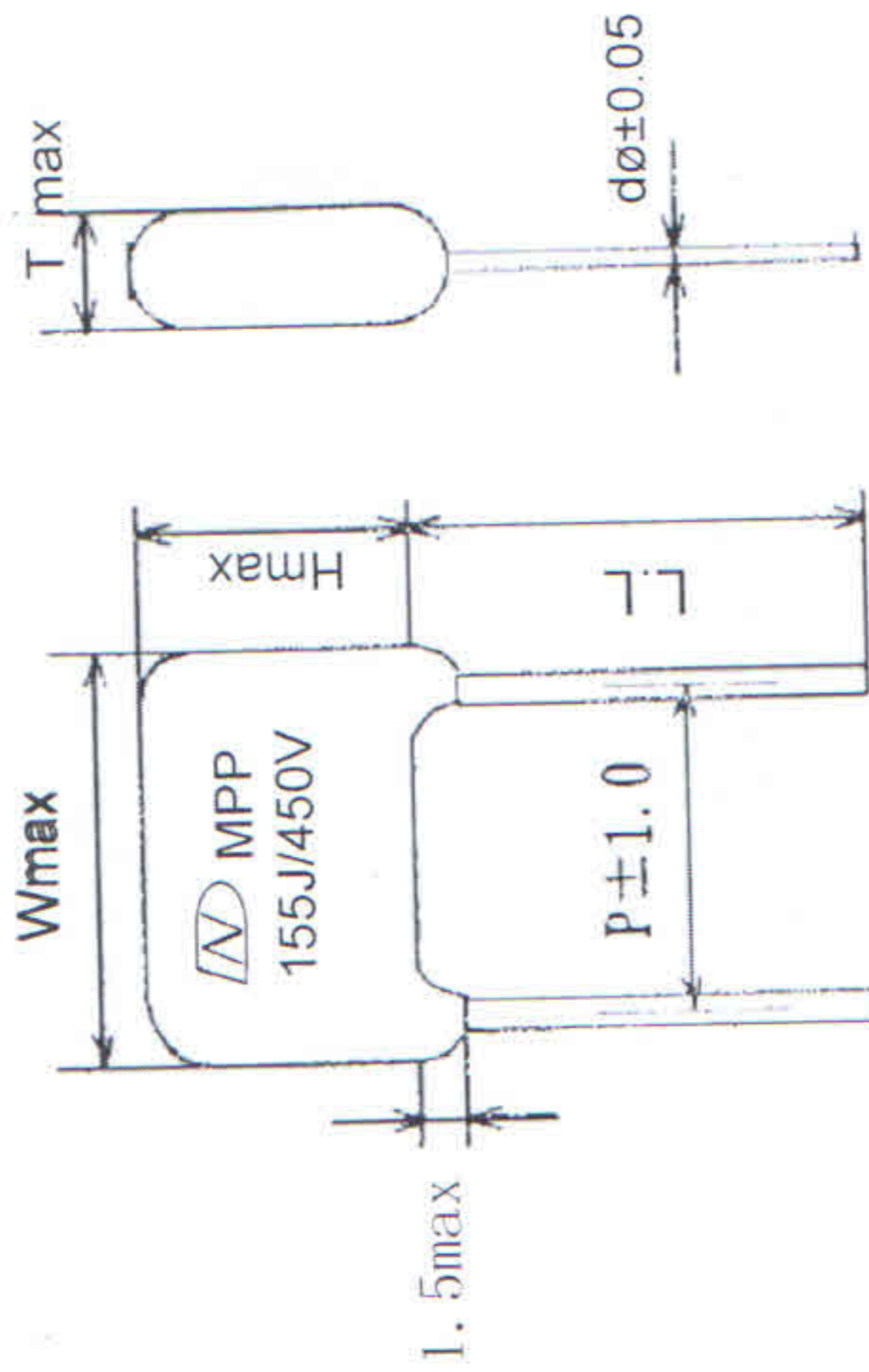


P/N:MPP 155J450V P=15

DRAWING & MARKING

DAIN

Protection/Coating 外封装	Flame retardant epoxy resin (UL94V-0)
Resin filled 灌封	
Lead Wire 导线	Φ 0.6 tinned steel copper wires
Colour 颜色	red



激光印字

Capacitance 容量	@ 1KHZ 23°C±3°C 1.5µF	Tolerance 误差	±5%	Rated Voltage 额定电压	@ 25°C 50/60HZ 450V
Dielectric 介质	Polypropylene film	Plates 导体	Metallized Aluminum	Construction 结构	Winding
	Dissipation Factor 损失角	@ 1K HZ 1Vrms 25°C max	50~60KHZ 1KHZ 10KHZ 150KHZ	0.10% 0.15% 720VDC	
Test Voltage 测试电压	1.6 times of rated voltage for 5 seconds cut off current at 10mA		DC lead to lead DC lead to case AC lead to lead AC lead to caseVDCVACVAC	
Dielectric Withstanding Voltage 介质耐压强度	Between terminals 250VACx 200% 1To 5 sec max		Lead to lead Lead to case	900VDC >10000 MΩ*ufMΩ	
Insulation Resistance 绝缘阻抗	20°C@ 100 VDC 60 seconds min 20°C@.....VDC..... seconds min		Max pulse rise time	(v/sec)	
IpeakA 最大值电流	@70°C			Amps	
IrmsA 实效值电流	@70°C		Amps	
Surge/Pulse voltage 冲击电压	140% rated voltage max			VDC	
E.S.R 等效串联阻抗抗值			Standard 依循标准	IEC384 -2	

Dimension(尺寸)mm			
W	H	T	P
18.0(MAX)	15.5(MAX)		15±1.0
dø	L.L		
0.6±0.05	25.0±3.0		

Confirmation area 客户承认返回区	Operating Temperature 工作温度范围 From Minus -40 °C to Plus +105°C	Design code 设计代码: MPP 155J450V P=15
<p>ROHS</p>	DATE 日期: 2015-07-09	Designer 设计师
	3RD ANGLE PROJECTION 第三角法	Drawing 绘图员
	SCALE ~ UNIT mm	Approval 核准
		Drawing NO.

B. P. IMPEX PVT. LTD.
206, 9/2, EAST PATEL NAGAR,
NEW DELHI-110008.