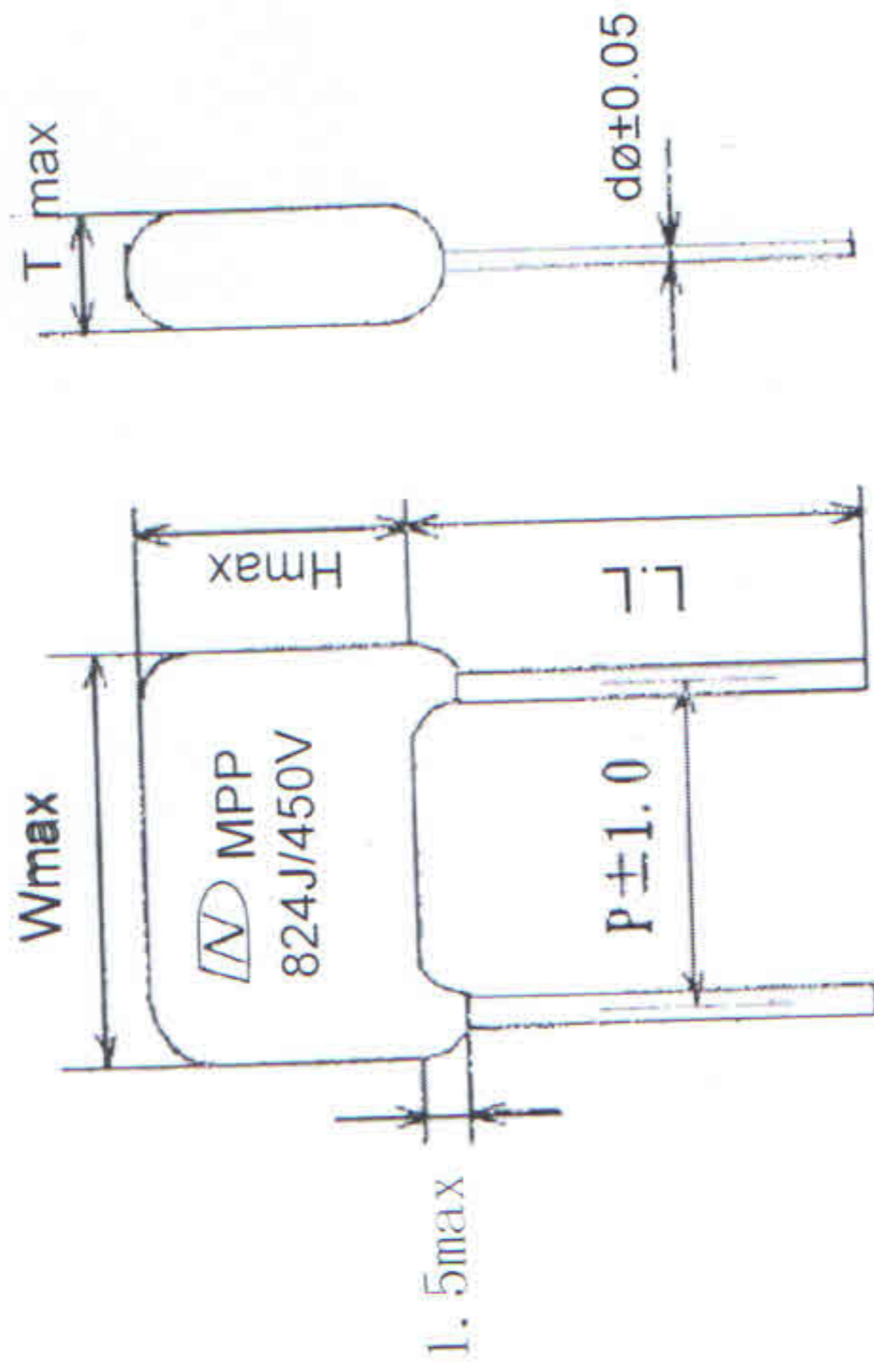


P/N:MPP 824J450V P=15

DRAWING & MARKING

DAIN

Protection/Coating 外封装	Flame retardant epoxy resin (UL94V-0)
Resin filled 灌封	
Lead Wire 导线	Φ 0.6 tinned steel copper wires
Colour 颜色	red



激光印字

Capacitance 容量	@ 1KHZ 23°C±3°C 0.82 µF	Tolerance 误差	±5%	Rated Voltage 额定电压	@ 25°C 50/60HZ 450V
Dielectric 介质	Polypropylene film	Plates 导体	Metallized Aluminum	Construction 结构	Winding
			50~60HZ	0.10%	
Dissipation Factor 损耗角	@ 1K HZ 1Vrms 25°C max		1KHZ	0.15%	
	1.6 times of rated voltage for 5 seconds cut off current at 10mA		10KHZ	720VDC	
Dielectric Withstanding Voltage 介质耐压强度	Between terminals 250V ACx 200% 1To 5 sec max		DC lead to leadVDC	
	20°C@ 100 VDC 60 seconds min		DC lead to caseVAC	
Insulation Resistance 绝缘阻抗	20°C@.....VDC..... seconds min		AC lead to leadVAC	
	max		AC lead to case	900VDC	
dv/dt 单位时间电压变化率			Lead to lead	>10000 MΩ*uf	
IpeakA 最大值电流	@70°C		Lead to caseMΩ	
IrmsA 实效值电流	@70°C		Max pulse rise time	(v/sec)	
Surge/Pulse voltage 冲击电压	140% rated voltage max			Amps	
E.S.R 等效串联阻抗抗值			Standard 依循标准Amps	
Safety approval安规认证				VDC	
				IEC384 -2	

Remark 备注:	<p>RoHS</p>	<p>Confirmation area 客户承认签回区</p> <p>B. P. IMPEX PVT. LTD. 206, 9/2, EAST PATEL NAGAR, NEW DELHI-110008.</p>	<p>Operating Temperature 工作温度范围 From Minus -40 °C to Plus +105°C</p>	Designer 设计师	Design code 设计代码: MPP 824J450V P=15
				Drawing 绘图员	Approval 核准
DATE 日期: 2015-07-09		3RD ANGLE PROJECTION 第三角法		SCALE	UNIT mm